

7TH-12TH FLOOR

Area Schedule

Area(sq.ft) Workshop	Gross Floor Area	Saleable Area	Unit Covered Area	Apportioned Share Of Common Area
Workshop A	1,890	1,248	1,248	642
Workshop B	2,022	1,335	1,335	687
Workshop C	1,630	1,076	1,076	554
Workshop D	1,653	1,091	1,091	562
Workshop E	1,589	1,049	1,049	540
Workshop F	1,775	1,172	1,172	603
Workshop G	2,040	1,347	1,347	693
Workshop H	1,936	1,278	1,278	658
Workshop J	1,809	1,194	1,194	615
Workshop K	1,645	1,086	1,086	559
Workshop L	1,656	1,093	1,093	563
Workshop M	1,651	1,090	1,090	561
Workshop N	1,572	1,038	1,038	534
Workshop P	2,019	1,333	1,333	686

Floor to Floor Height: approximately 3,800 mm

備註 Notes

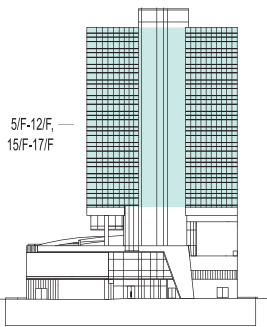
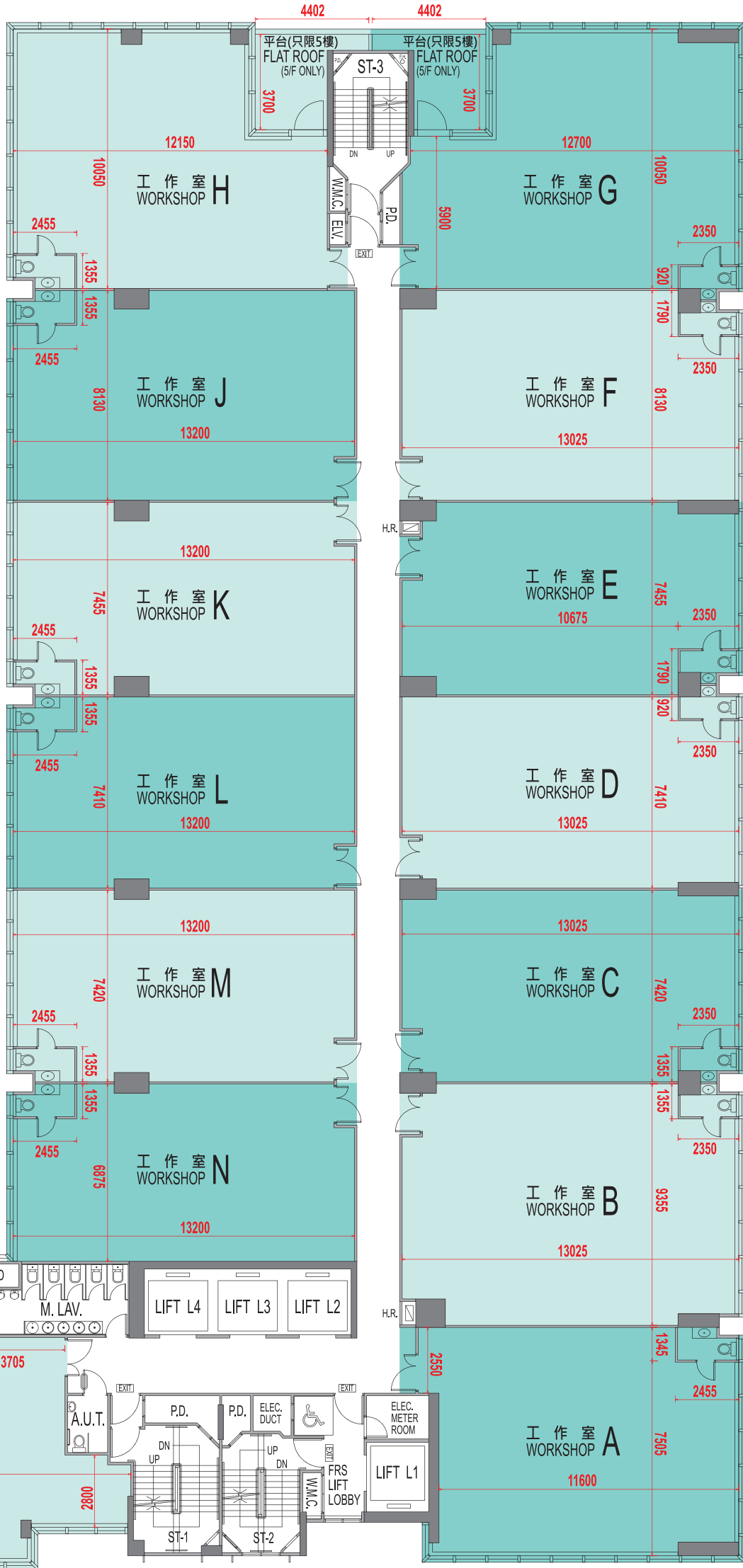
不設4樓、13樓及14樓 Omitted 4/F, 13/F and 14/F

賣方保留權利不時改動發展項目的建築圖則及其他圖則。發展項目的設計以政府相關部門最後批准的圖則為準。The vendor reserves the right to make alterations to the building plans and other plans relating to the Development from time to time, and the design of the Development shall be subject to the final plans approved by the relevant Government authorities.

因較高樓層的結構牆的厚度遞減，較高樓層的單位的內部面積，一般比較低樓層的單位的內部面積稍大。The internal areas of units on upper floors will generally be slightly larger than lower floors due to the reducing thickness of structural walls on upper levels.

層與層之間的高度指該樓層之石屎地台面與上一層石屎地台面之高度距離。Floor-to-floor height refers to the height between the top surface of the structural slab of a floor and the top surface of its immediate upper floor.

樓面平面圖之尺規所列數字為以毫米標示之建築結構尺寸。The dimensions in the floor plans are all structural dimensions in millimetre.



單車徑 CYCLING LANE